

#### PARTS DETAIL :-

S No.	PART NAME	MATERIAL	QTY.
1	BODY	D.I	1
2	DISC	D.I	1
3	LINER	EPDM	1
4	STEM	AST A 276 , GR SS410	1
5	BUSH	PTFE / NYLON	3
6	O-RINGS	EPDM / NITRILE	2
7	NOTCH PLATE	M.S (POWDER COATING)	1
8	HANDLEVER	M.S (POWDER COATING)	1
9	FASTENER	SS / MS.	3

#### HYDROSTATIC TEST PRESSURE

BODY (Kg/cm <sup>2</sup> )	SEAT (Kg/cm <sup>2</sup> )
24	17.6

SIZE	RATING	VALVE DIMENSIONS									MOUNTING FLANGE DETAIL		
		A	H1	H2	H3	L	ØD	FLANGE STANDARD	FACING	PCD-1	PCD	HOLE DIA	NO. OF HOLES
DN-40	PN25	33	57	125	28	175	40.5	IS:1538/BS:4505	RAISED FACE	126	50	7	4
DN-50	PN25	43	62	120	28	175	50.5	IS:1538/BS:4505	RAISED FACE	145	50	7	4
DN-65	PN25	46	72	130	34	216	65	IS:1538/BS:4505	RAISED FACE	160	50	7	4
DN-80	PN25	46	76	140	34	216	80	IS:1538/BS:4505	RAISED FACE	180	50	7	4
DN-100	PN25	52	95	160	39	267	100	IS:1538/BS:4505	RAISED FACE	210	50	7	4
DN-125	PN25	56	114	170	39	267	123	IS:1538/BS:4505	RAISED FACE	240	70	10	4
DN-150	PN25	56	126	190	39	267	148.5	IS:1538/BS:4505	RAISED FACE	275	70	10	4
DN-200	PN25	60	161	230	45	350	197	IS:1538/BS:4505	RAISED FACE	295	70	10	4
DN-250	PN25	68	215	280	45	350	250.5	IS:1538/BS:4505	RAISED FACE	358	70	12	4
DN-300	PN25	78	230	310	45	350	299.5	IS:1538/BS:4505	RAISED FACE	429	70	12	4

All Dimensions are in MM unless otherwise stated.

Due to Continuous Development we reserve the rights to change in dimensions & Design keeping standard specification same.

# SKS

## VALVES

CLIENT

P.O./ENQ. NO.

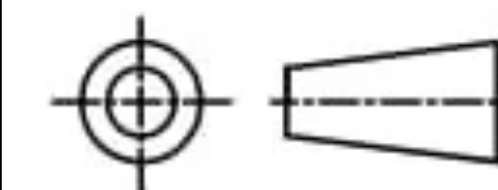
Model : SKS 118EL

GAD No. : 19BFDTO003-01

Face to Face :

Valve Type : BFCONCENTRIC

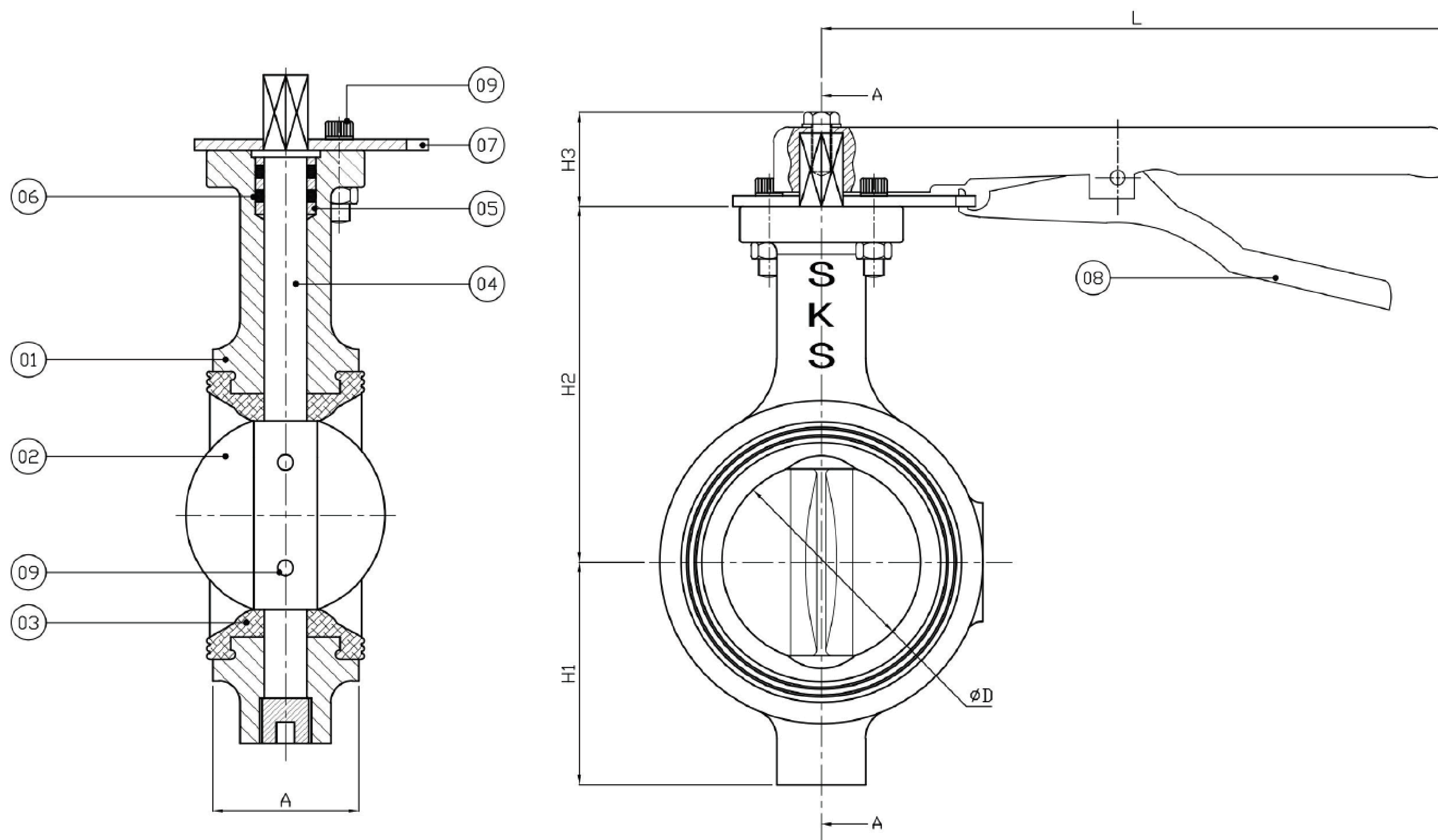
SEAT: Hand Lever



SCALE  
N.T.S

SHEET 1 OF 1





### . Part Descriptions

PT No.	PART NAME	MATERIAL
01	BODY	D.I
02	DISC	D.I. (EPOXY COATED)
03	LINER	EPDM
04	STEM	ASTM A 276, GR SS410
05	BUSH	PTFE / NYLON
06	O-RING	EPDM / NITRILE
07	NOTCH PLATE	M. S. (POWDER COATING)
08	HAND LEVER	M. S. (POWDER COATING)
09	PIN	S.S
10	FASTNER	G.I.

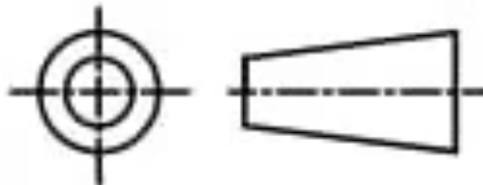
**Model No. - SKS118EL**

**Standard: IS13095**

### . Outside Dimension (mm)

SIZE	40	50	65	80	100	125	150	200	250	300
A	33.00	43.00	46.00	46.00	52.00	56.00	56.00	60.00	68.00	78.00
H1	61.00	67.00	75.00	82.00	100.00	114.00	135.00	161.00	205.00	230.00
H2	106.00	110.00	118.00	130.00	145.00	156.00	176.00	220.00	280.00	305.00
H3	28.00	28.00	34.00	34.00	39.00	39.00	39.00	45.00	45.00	45.00
L	175.00	175.00	216.00	216.00	267.00	267.00	267.00	350.00	350.00	350.00
Ø D	40.50	50.50	65.00	80.00	100.00	123.00	148.50	197.00	250.50	299.50

**SKS**  
VALVES

CLIENT			
P.O./ENQ. NO.			
Model :	SKS 118EL		
GAD No. :			
Face to Face :			
Valve Type :			
SEAT:	SCALE N.T.S		
	SHEET 1 OF 1		

All Dimensions are in MM unless otherwise stated.

Due to Continuous Development we reserve the rights to change in dimensions & Design keeping standard specification same.