



Call: 011-43177627, 28, 29
Mail: info@sksvaives.com
Website: www.sksvaives.com
Office: B-213, Block B, Industrial Area Phase I,
Naraina, New Delhi-110028

PRESSURE REDUCING VALVE (PRV) **SKS 102 (MADE IN ITALY)**



SKS 102

SKS 102

Brass pressure reducing valve;
PN 15;
Adjustable outlet pressure between 1 and 4 bar;
Brass diaphragm system;
Patent pending

FIELDS:

The pressure reducing valves series SKS 102 series are suitable for reduction and control of pressure in plants with the following characteristics:

Max inlet pressure:	15 bar
Field of action (outlet pressure):	1 - 4 bar
Max temperature of use:	80° C
Threading of connection:	ISO 228/1
Suitable fluids:	Water, compressed air
Reduction rate:	5 : 1

LIST OF MATERIALS:

Metal of the body:	brass alloy CW617N - UNI EN 12165
Metal of the inner parts:	brass alloy CW614N - UNI EN 12164
Seat:	brass alloy CW617N - UNI EN 12165
Bar:	brass alloy CW614N - UNI EN 12164
O-rings:	NBR 70 sh
Plastic parts:	Ultramid® A3K (BASF)



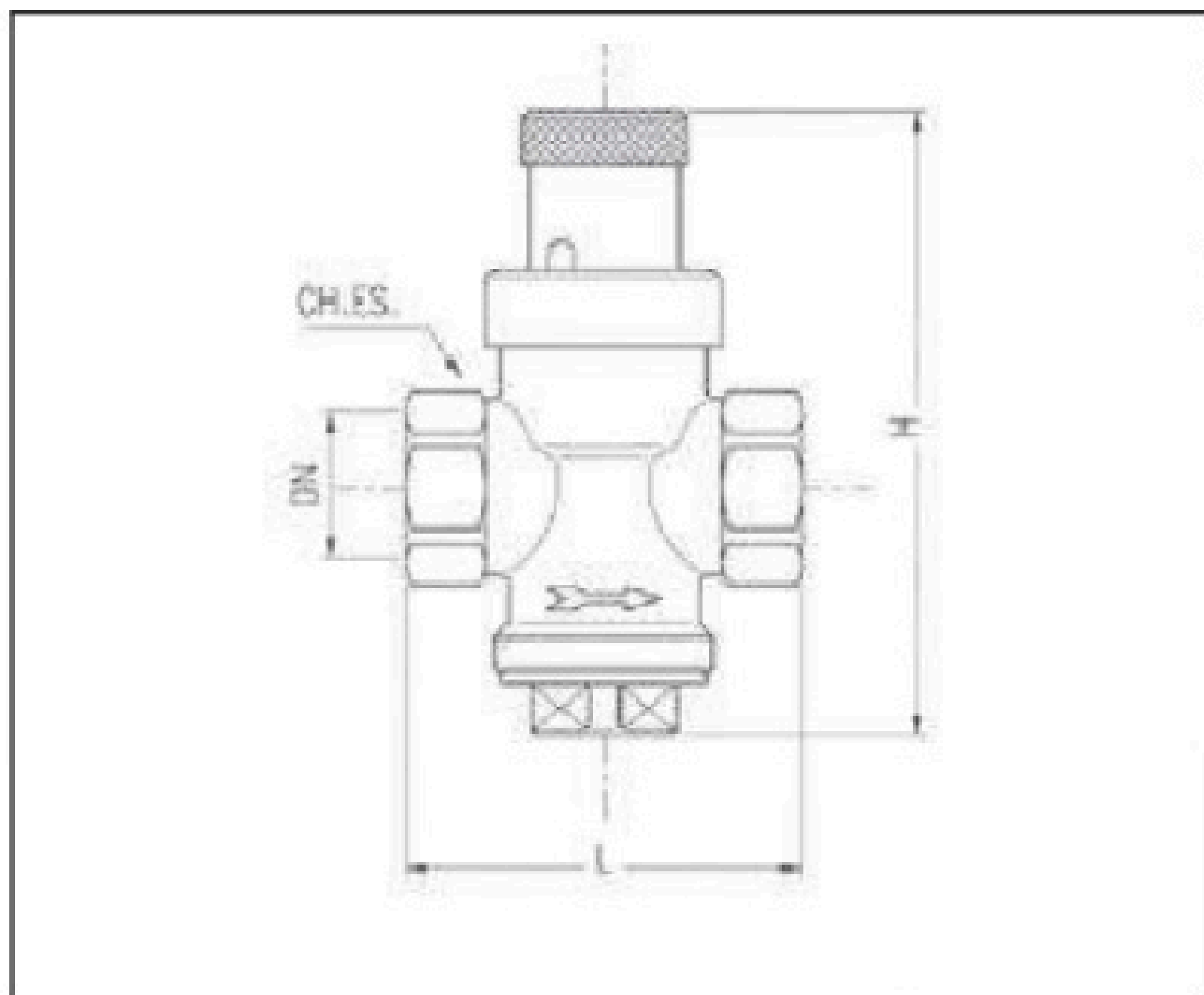
Call: 011-43177627, 28, 29

Mail: info@sksvaives.com

Website: www.sksvaives.com

Office: B-213, Block B, Industrial Area Phase I,
Naraina, New Delhi-110028

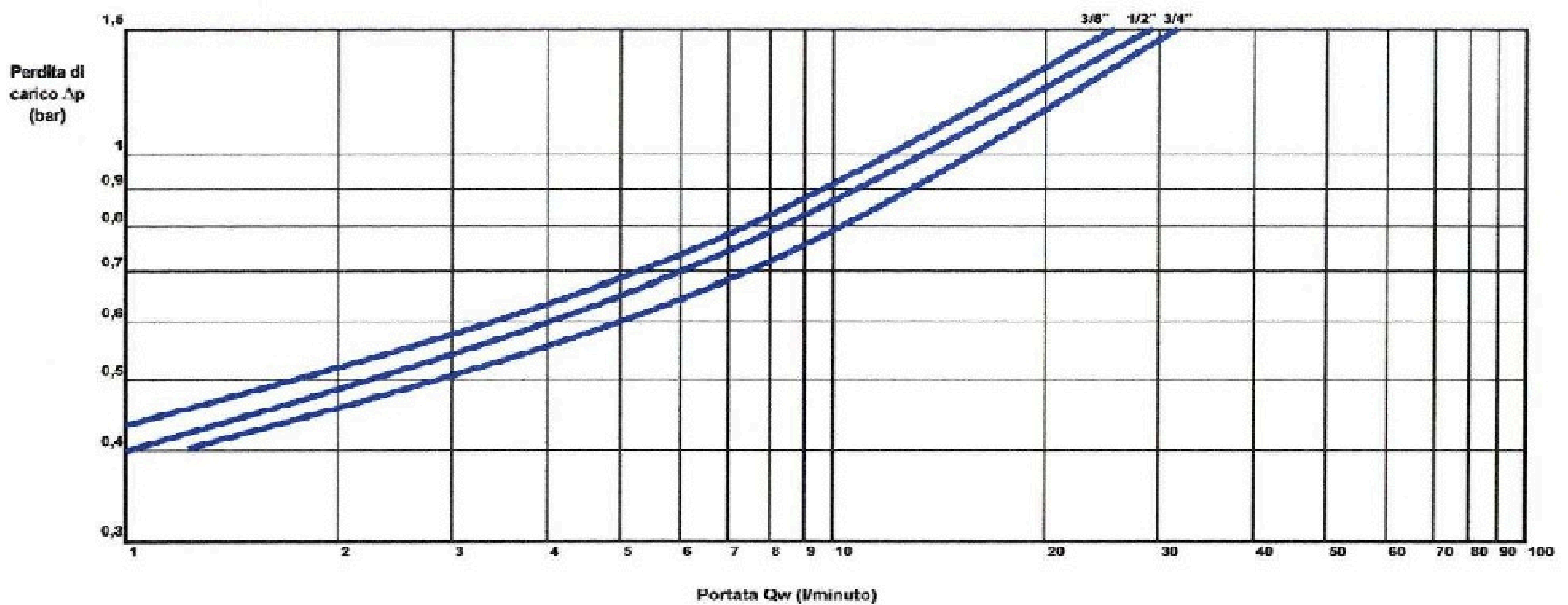
MAIN DIMENSIONS OF THE PRESSURE REDUCING VALVES SKS 102 :



ITEM	DN	H	L
SKS 102	1/2"	93	60
SKS 102	3/4"	93	60

DISCHARGE AND HEADLOSS DIAGRAM:

**DIAGRAMMA DI PORTATA E PERDITA DI CARICO - DISCHARGE AND HEADLOSS DIAGRAM
SERIE MINIBRASS**





Call: 011-43177627, 28, 29
Mail: info@sksvaives.com
Website: www.sksvaives.com
Office: B-213, Block B, Industrial Area Phase I,
 Naraina, New Delhi-110028

BEST HYDRAULIC DISCHARGE OF PRESSURE REDUCERS SKS 102 SERIES

In order to choose the best pressure reducers for any plant, we suggest to follow the indications mentioned in the underexposed table with the best running pressure of the valves SKS 102; the values are exposed both in litres/minute and cbm/hour, and indicate the field of use where you can obtain the best functioning, silence and smaller loss of charge of the valves.

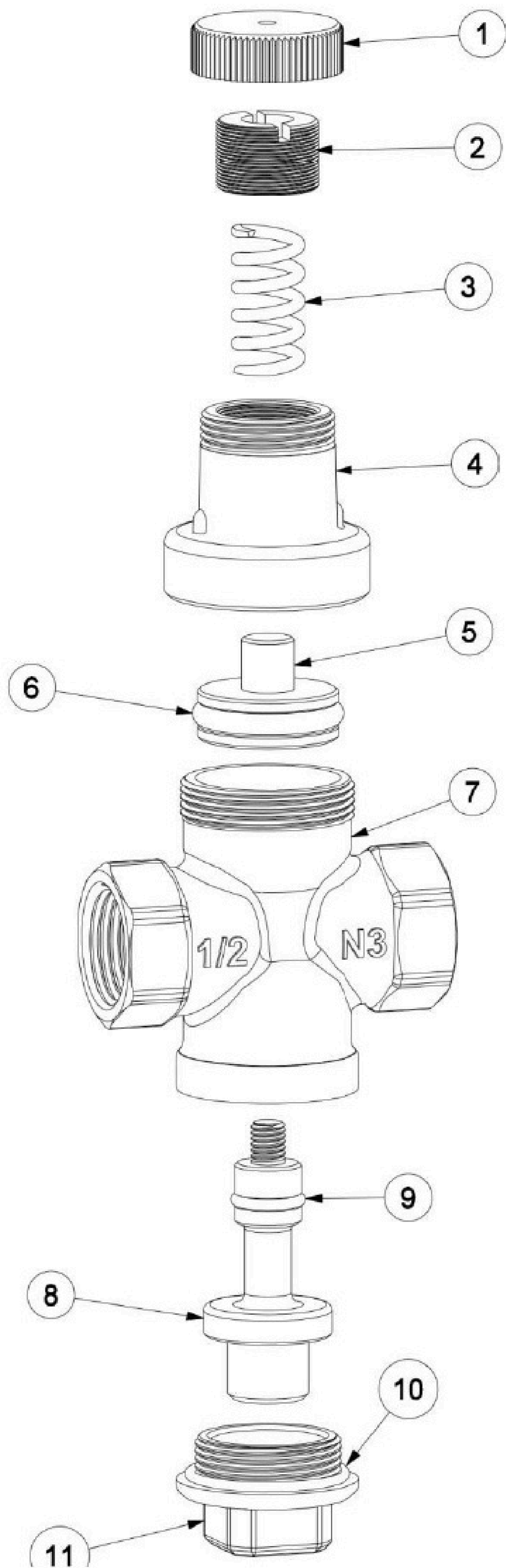
MODEL	SIZE	BEST HYDRAULIC DISCHARGE	
		L/min	Cbm/hour
SKS 102	1/2"	10 - 14	0.6 - 0.8
SKS 102	3/4"	12 - 16	0.7 - 0.9

HOW TO REGULATE THE PRESSURE

All SKS pressure reducers are tested before being packaged; during the proof they are pre-set at the outlet pressure of 3 bars; the outlet pressure can be easily modified when the valve is installed on the plant.

To modify outlet pressure first remove black plastic cap; then by using, a screwdriver, turn the brass spring holder as shown in the pictures below: by turning clockwise pressure increases, while counter-clockwise the pressure decreases. La A right setting should be made while the downstream plant is closed.





N	PART	MATERIAL	IN CONTACT WITH WATER
1	Closure Cap	Plastic	NO
2	Spring Holder	Brass	NO
3	Spring	Cadmium Plated Steel	NO
4	Bonner	Brass	NO
5	Diaphragm	Brass	YES
6	O-Ring	NBR	YES
7	Body	Brass	YES
8	Plug	Brass	YES
9	O-Ring	NBR	YES
10	O-Ring	NBR	YES
11	Bottom Plug	Brass	YES

SKS
VALVES

Call: 011-43177627, 28, 29

Mail: info@sksvaives.com

Website: www.sksvaives.com

Office: B-213, Block B, Industrial Area Phase I,
Naraina, New Delhi-110028