

PT No.	PART NAME	MATERIAL
1	BODY	CI
2	SEAT	EPDM
3	PLATES	D.I. (LAPPED) ENP
4	SHAFT	SS304
5	SPRING	SS304
6	O-RING	NITRILE / EPDM
7	PLUG	M.S. (CROME PLATED)
8	WASHER	STAINLESS STEEL

HYDROSTATIC TEST PRESSURE	
BODY (Kgf/cm ²)	SEAT (Kgf/cm ²)
24	17.6

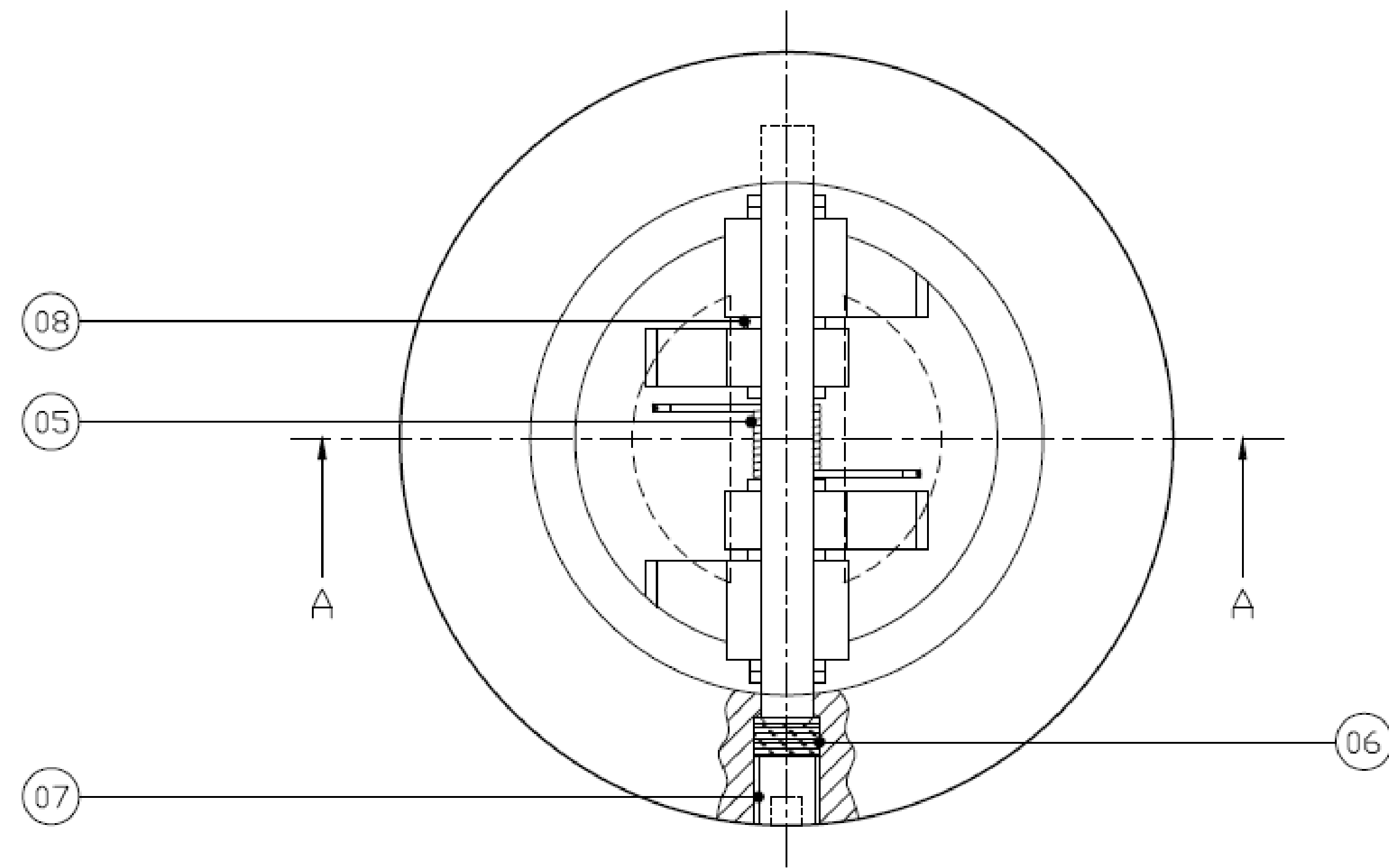
SIZE	RATING	40	50	65	80	100	125	150	200	250	300	350	400	450	500
ØA	PN16	52	63	75	92	116	145	169	220	273	324	357	407	457	508
ØB	PN16	80	100	120	130	170	192	215	275	335	405	447	510	545	602
H	PN16	43	54	54	57	64	70	76	95	108	143	184	191	203	213

SKS
VALVES

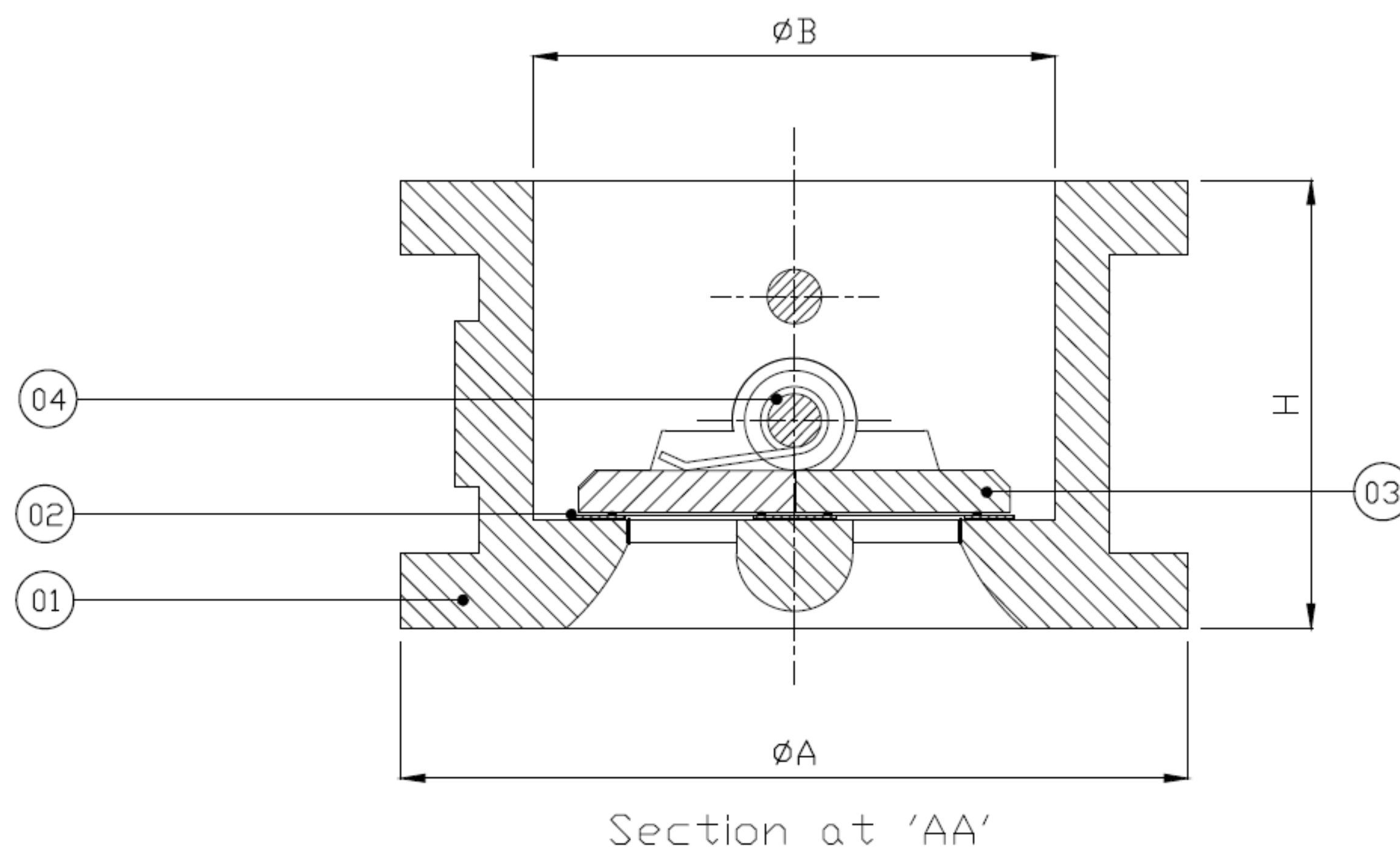
CLIENT	
P.O./ENQ. NO.	
Model :	SKS310D
GAD No. :	19DPDT0001-02
Face to Face :	
Valve Type :	
Operator:	
SCALE N.T.S	
SHEET 1 OF 1	

Due to Continuous Development we reserve the rights to change in dimensions & Design keeping standard specification same.

All Dimensions are in MM unless otherwise stated.



PT No.	PART NAME	MATERIAL
01	BODY	C.I
02	SEAT	EPDM
03	PLATES	D.I. (LAPPED)
04	SHAFT	ASTM A 276, GR SS410
05	SPRING	AISI 302
06	O RING	NITRILE
07	PLUG	M. S. (CHROME PLATED)
08	FASTNER	STAINLESS STEEL



SIZE	40	50	65	80	100	125	150	200	250	300	350	400	450	500
ØB	52.00	63.00	75.00	92.00	116.00	145.00	169.00	220.00	273.00	324.00	357.00	407.00	457.00	508.00
ØA	80.00	100.00	120.00	130.00	170.00	192.00	215.00	275.00	335.00	405.00	447.00	510.00	545.00	602.00
H	43.00	54.00	54.00	57.00	64.00	70.00	76.00	95.00	108.00	143.00	184.00	191.00	203.00	213.00

NOTE : FLANGE DRILLING IS AS PER BS10 TABLE

All Dimensions are in MM unless otherwise stated.

Due to Continuous Development we reserve the rights to change in dimensions & Design keeping standard specification same.

SKS
VALVES

CLIENT	
P.O./ENQ. NO.	
Model :	SKS 310D
GAD No. :	
Face to Face :	
Valve Type :	
Operator:	
SCALE N.T.S	
SHEET 1 OF 1	